



Corporate Parenting Report

July 2012

**Children Looked After
Children Subject to a Child Protection Plan**

(Activity to end of May 2012)

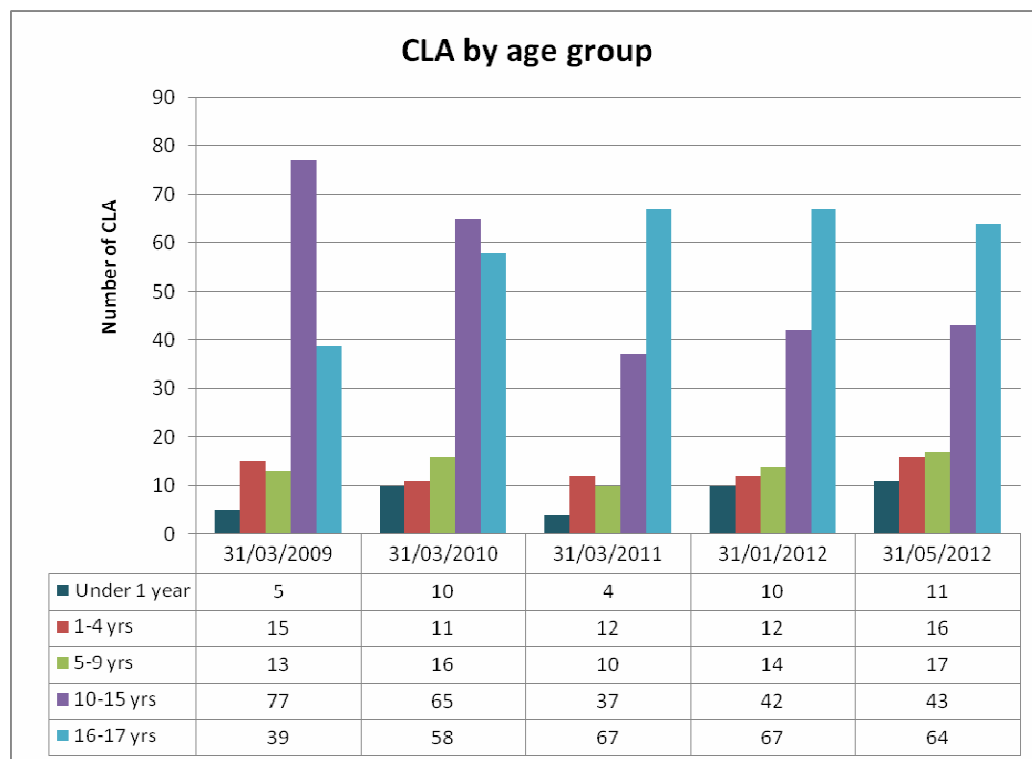
CONTENTS

PART A: CHILDREN LOOKED AFTER (CLA)	3
A1) AGE GROUPS	3
A2) GENDER.....	4
A3) ETHNICITY	5
A4) PLACEMENT TYPE	6
PART B: CHILDREN SUBJECT TO A CHILD PROTECTION PLAN (CPP)	8
B1) AGE GROUPS	8
B2) ETHNICITY	9
B3) GENDER.....	10
B4) CATEGORY OF ABUSE	11
B5) DURATION OF PLAN.....	12
PART C: ADDITIONAL INFORMATION	13
C1) NUMBERS OF CLA & CPP	13
C2) KEY PERFORMANCE INDICATORS.....	14

Part A: Children Looked After (CLA)

Harrow's numbers & rate of looked after children have historically been lower than England & statistical neighbours. At 31st May 2012 there are 151 Children looked after. Harrow has a higher proportion of males who are looked after and also a considerably higher proportion of 16-18 year olds in the care system

A1 - Age Group



The overall trend is a decrease in 16-17 year olds over the last year and a small increase in all other age groups. 16-17 year olds remain the largest group.

We can see a 'bulge' moving through the years since 2009. Age group 10-15 years has dropped significantly as young people moved into the 16-18 age group and is now in line with London and statistical neighbour average. There is no single reason for the high numbers of older CLA.

Age 16 to 18 years has dropped slightly over the last year and we can expect it to drop further as more young people reach 18. The proportion is currently higher than England, London and statistical neighbour average.

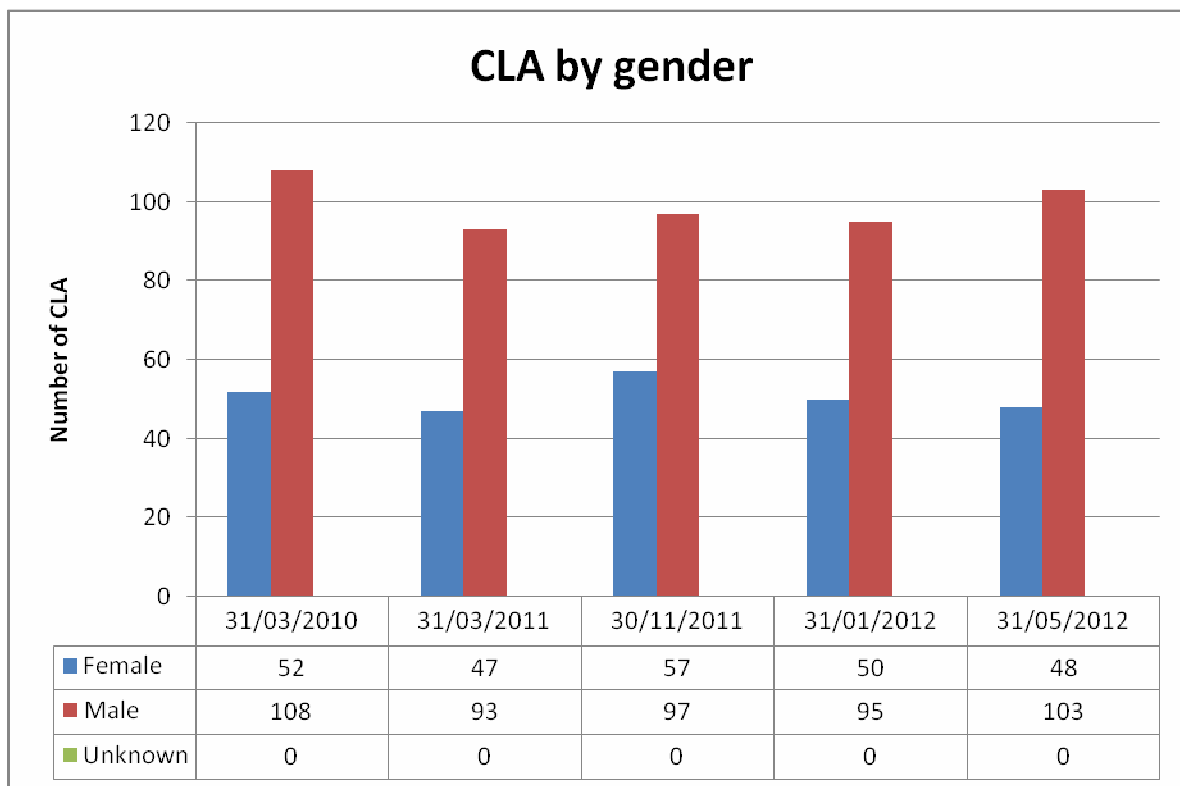
Numbers of younger CLA have increased since 2011. This trend is found across London and reflects the growing birth rate and younger population.

Comparator Information for age of CLA at 31st March 2011

	Age at 31 March 2011 (years)				
	Under 1	1 to 4	5 to 9	10 to 15	16 -18
England	6	18	18	37	21
London	5	14	15	37	29
Statistical neighbours Average	4	16	16	36	30
Harrow	3% (4)	9%(12)	7%(10)	34%(45)	48%(65)

Source: SSDA903

A2 - Gender



Harrow has a higher proportion of males who are looked after. Since 31st March 2011 the number of males and females looked after has remained fairly stable.

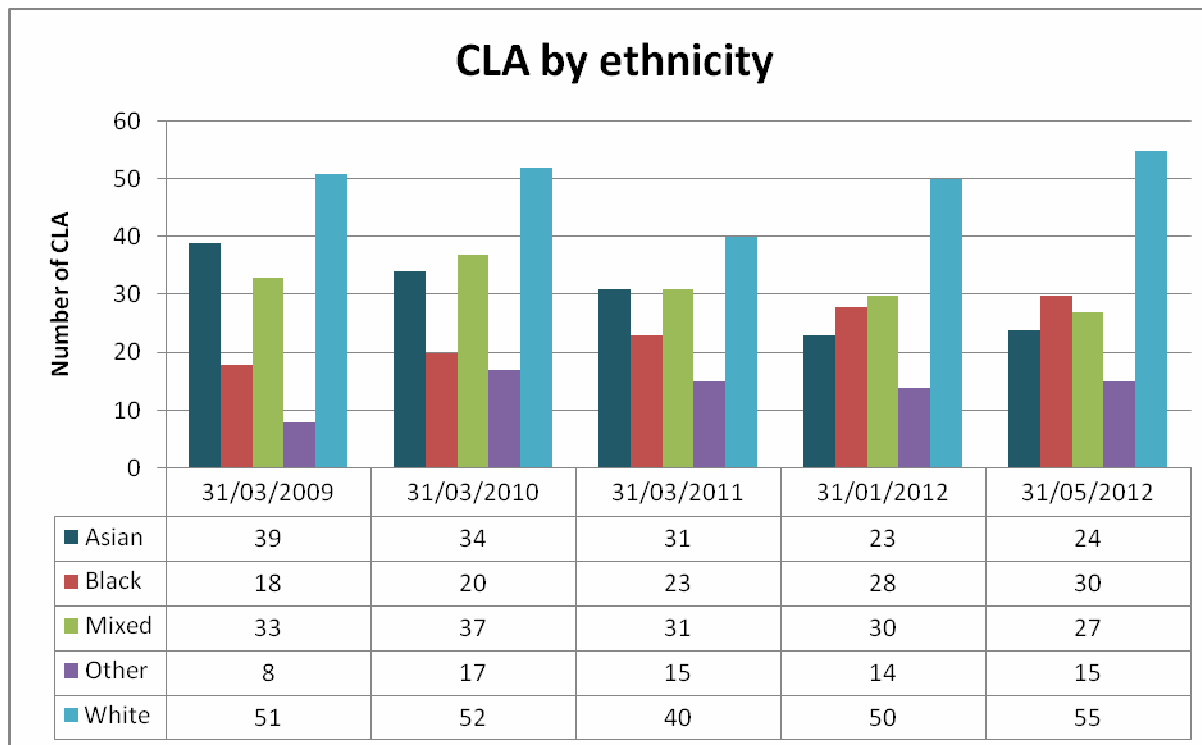
Comparator info CLA by gender 31.3.2011

	Gender	
	Male	Female
England	56	44
London	57	43
Statistical neighbours Average	59	41
Harrow	67%(95)	33%(45)

Source: SSDA903

A3 - Ethnicity

Harrow CLA ethnicity over time



As would be expected of Harrow's diverse population, the representation of BME groups is considerably higher than England and the statistical neighbour average. However, the % of young people with Asian ethnicity is lower than would be expected given the make up of Harrow's younger population. Young people with Black ethnicity are overrepresented compared with population.

Numbers are relatively small, so there can be significant changes relating to a small number of sibling groups e.g. drop in 'white' CLA at 31.3.2011

The number of CLA in the 'mixed' category remains much higher than the statistical neighbour average and the England average – this reflects the growth of this ethnic category in Harrow's population.

Comparator Information on Ethnicity % 31.03.2011

	White	Mixed	Asian or Asian British	Black or Black British	Other Ethnic Groups
Harrow	29	21	22	17	11
Statistical Neighbour	45	14	16	24	5
England	77	9	5	7	2

Source: SSDA903

A4 - Placements

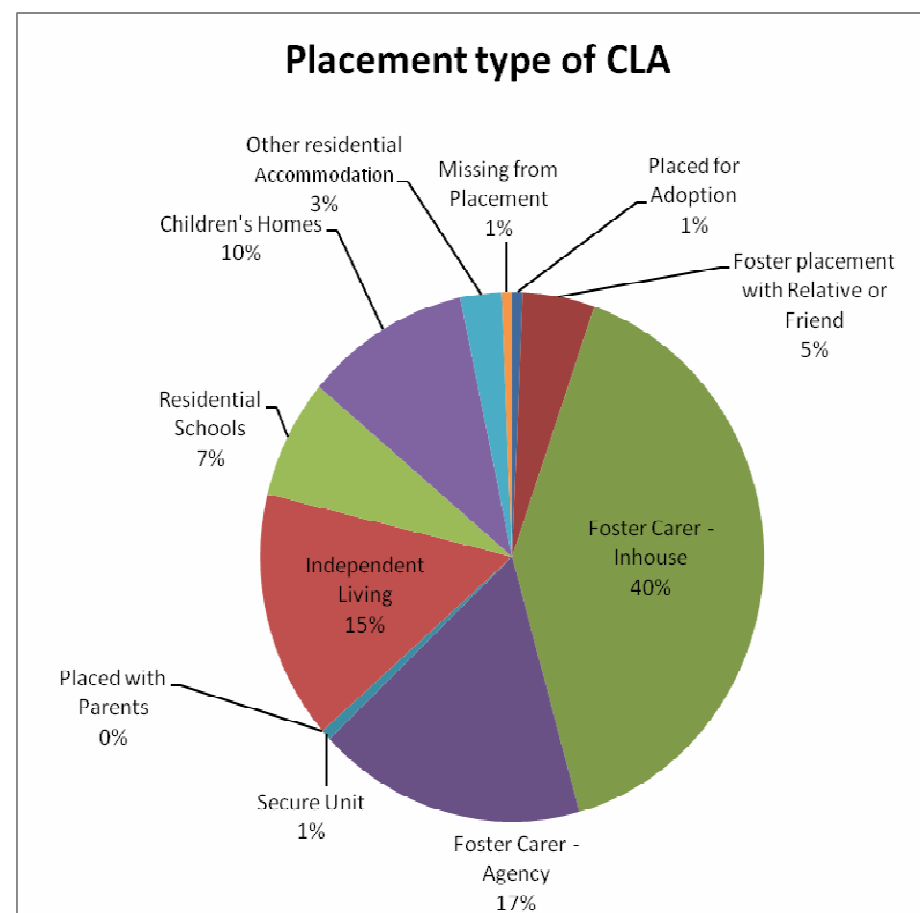
Harrow has a lower proportion of children in foster placements and slightly higher proportion of children in residential schools.

Comparison at 31 March 2011 by placement types

	Harrow		Statistical Neighbours	England
	Number	%	%	%
Foster placements	81	58	72	73
Placed for adoption	5	4	3	4
Placement with parents	3	2	4	6
Other placement in the community	23	16	9	4
Secure units, children's homes and hostels	11	8	14	10
Other residential settings	2	1	3	2
Residential schools	11	8	4	2
Missing - Absent for more than 24 hours from agreed placement	4	3	0	-
Other placement	0	0	0	-

Harrow Placement Numbers	May 2011	May 2012	Change	%
Placed for Adoption	4	1	-3	-75%
Young Offenders Institution or Prison	0	0	0	133%
Foster placement with Relative or Friend	3	0	-3	-100%
Placed with Parents	53	61	8	15%
Foster Carer - In-house	21	23	2	10%
Independent Living	30	28	-2	-13%
Foster Carer - Agency	10	11	1	10%
Residential Schools	2	1	-1	-50%
Secure Unit	6	16	10	167%

Harrow Placement Detail 31 May 2012



Other residential Accommodation	3	4	1	33%
Missing from Placement	4	1	-3	-75%
Grand Total	139	151		

Harrow has a lower total rate of foster care than comparator groups – this corresponds with a higher rate in other community placements (including independent living) and residential schools.

Use of in-house foster carers has continued to increase and agency foster care has reduced over the last year.

Harrow continues to have a higher rate of older CLA living independently. Many asylum seeking young people are in this type of accommodation.

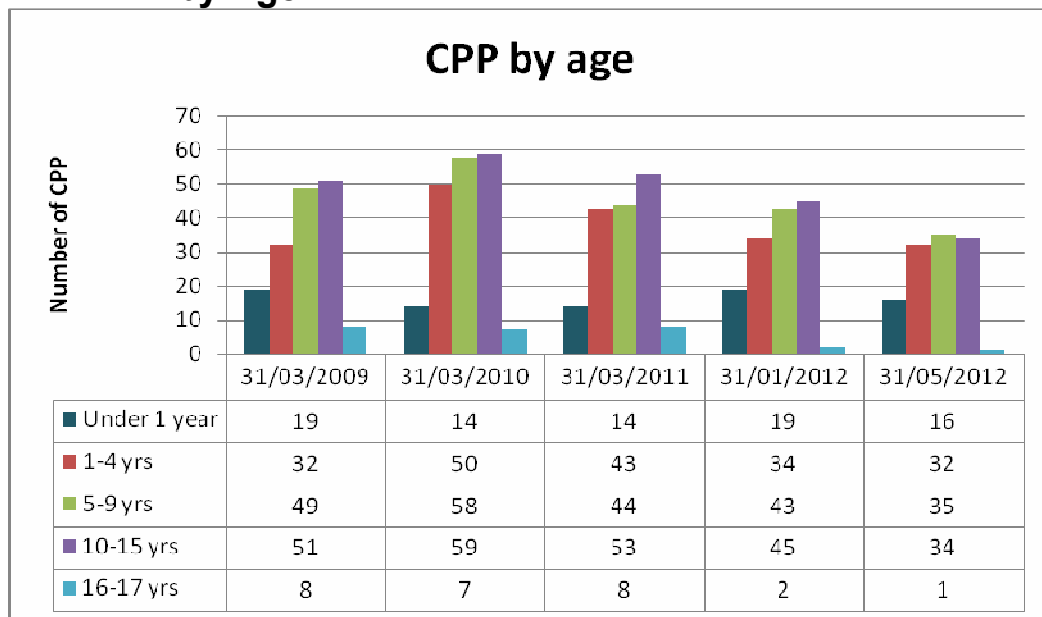
Placements in children's homes has increased significantly over the last year, largely relating to older children.

4 young people were missing from placement at the end of May 2011. There has reduced to one young person missing from placement at May 2012.

Part B: Children Subject to a Child Protection Plan (CPP)

Children are made the subject of a child protection plan (CPP) when they are considered to be at risk of physical, sexual, emotional harm or neglect. Overall Harrow has seen an increase in the number of children with a CPP at the end of the year but has fluctuated year on year, whilst there has been an upward trend nationally. Provisional figures for 31st March 2012 show 131 children with child protection plans which is approximately 19% drop. There were 118 children who were subject to a Child Protection Plan in Harrow on 31 May 2012.

B1 - CPP by Age



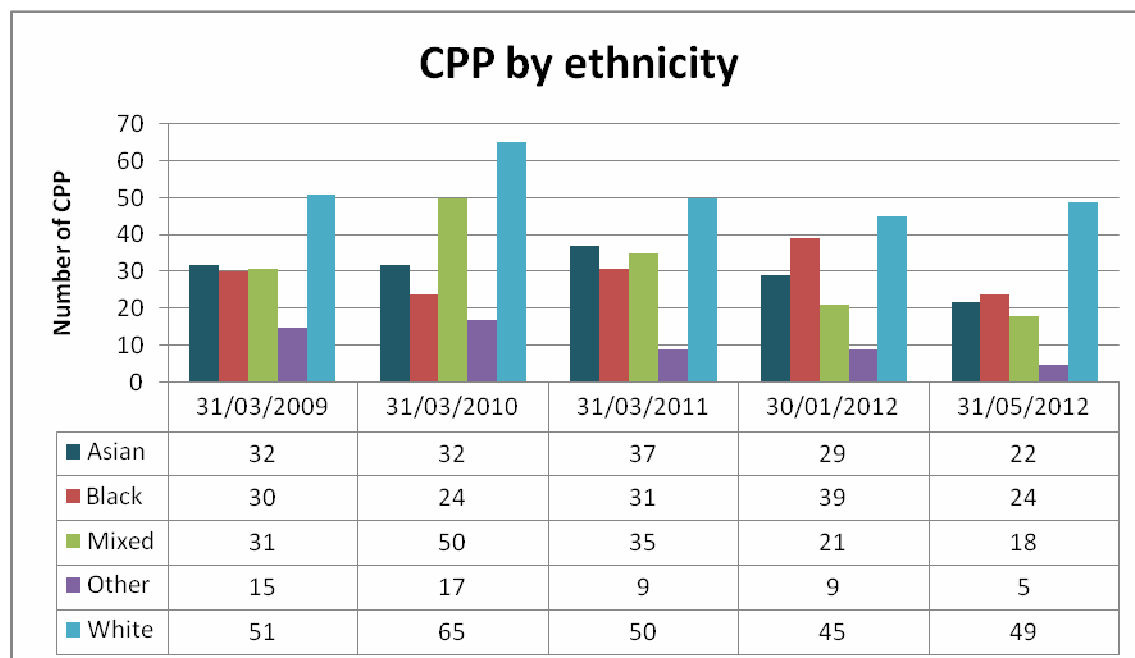
Since 2008/9 there is a decrease in the overall number of children aged 0-17 who became subject to CPP. Since 2010/11 there has been a decrease by 43 children who were subject to CPP. The decrease is across all age groups but in particular 10-15 year olds.

Comparator Info CPP by age group (%) 31.3.2011

	Under 1	1-4 years	5-9 years	10-15 years	16 & over
England	5.5	16.3	14.3	12.9	1.0
London	11	30	29	27	2
Harrow	8	27	27	32	5

Source: Cin Census

B2 - CPP by Ethnicity



Comparator Information Ethnicity of Children subject to Child Protection Plans at 31st March 2011 (%)

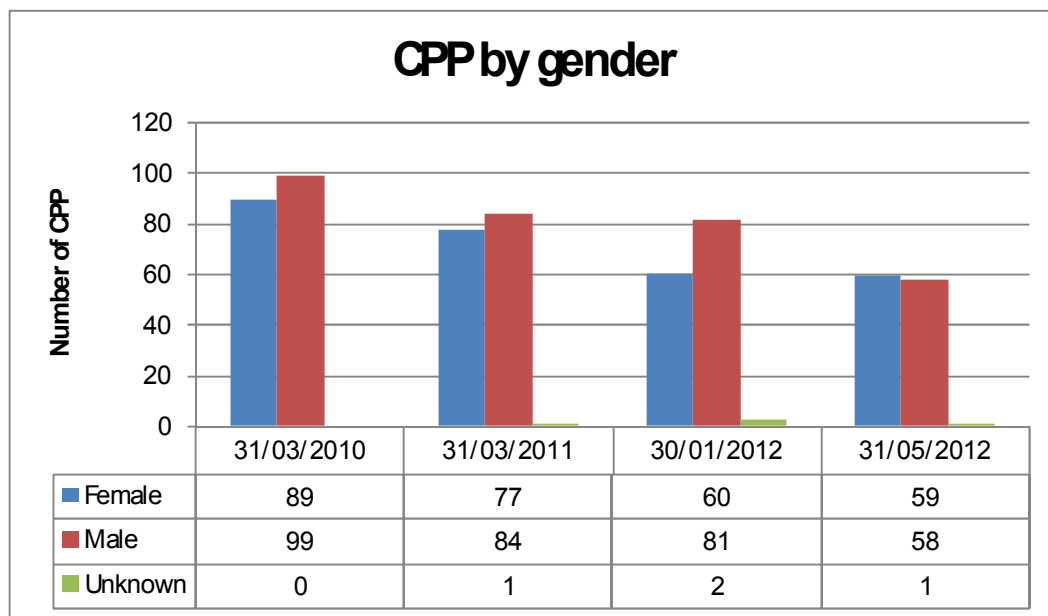
	White	Mixed	Asian or Asian British	Black or Black British	Other Ethnic Groups
Harrow	30	22	23	19	6
Statistical Neighbour	47.5	15	13	18	1
England	77	8	5	5	1

Source: Cin Census

The highest numbers of children who are subject to CPP in Harrow belong to White ethnic group. Since 2010/11 the number of these children is fairly constant. This group can be considered overrepresented compared with the make up of Harrow's younger population. There is a decrease in the number of children in the Asian, Black and Other ethnic groups. There is also a significant decrease in the number of children who belong to the Mixed ethnic group - by 17 children. Changes relating to small numbers of families and sibling groups can make a big difference as numbers in each group are comparatively small.

As would be expected in this very diverse borough, the number of children who fall under the white ethnic group is much lower in comparison to England and the statistical neighbour average. Compared to the England and the statistical neighbour average, Harrow has a higher number of children who fall under the Mixed, Asian, Black and other ethnic groups' categories.

B3 - CPP by gender



Harrow has tended to have a higher proportion of males with CPP. Since 31st March 2011 the number of males has reduced more than females so that numbers are now balanced.

The reduction in males with CPP has reduced most steeply between January and May 2012, corresponding to the ending of some longer term CPP.

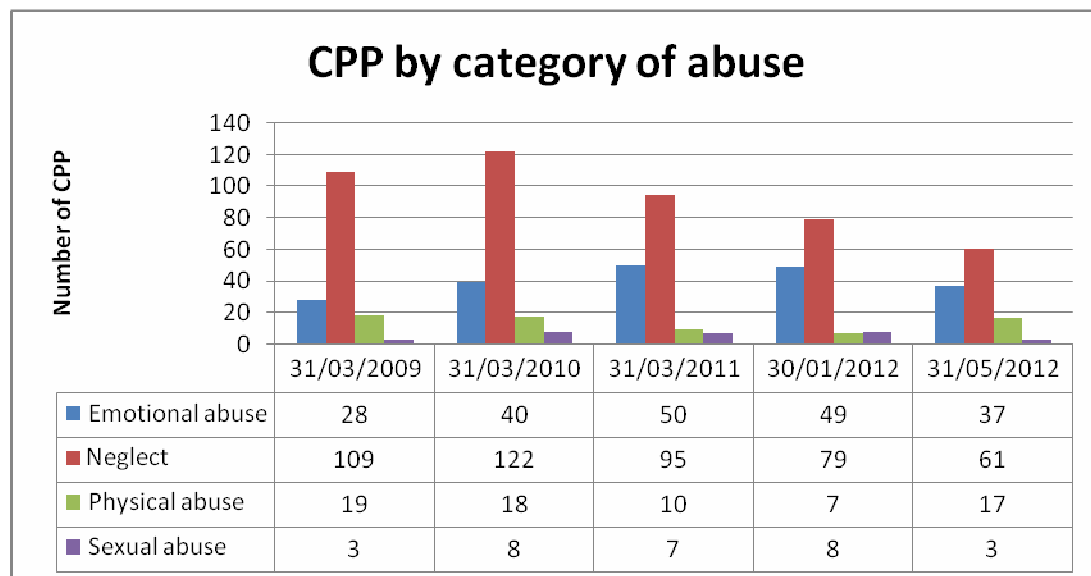
Table 11: Age groups & gender of children with Child Protection plans (%)

	Male	Female	Unborn/ Unknown Gender
England	50	48	2.0
London	49	48	3
Harrow	52	47	1

Source: Cin Census

B4 - CPP by Category of Abuse

Harrow has a high number of children requiring a plan under the category of neglect. Harrow records primary types of abuse as one of the four categories than recording as multiple e.g. emotional abuse may be present in all types of abuse.



Since 31st March 2011 there is a decrease in the number of children requiring a plan under the categories of emotional abuse, neglect and sexual abuse. However there is an increase in the number of children requiring a plan under the category of physical abuse by 7 children.

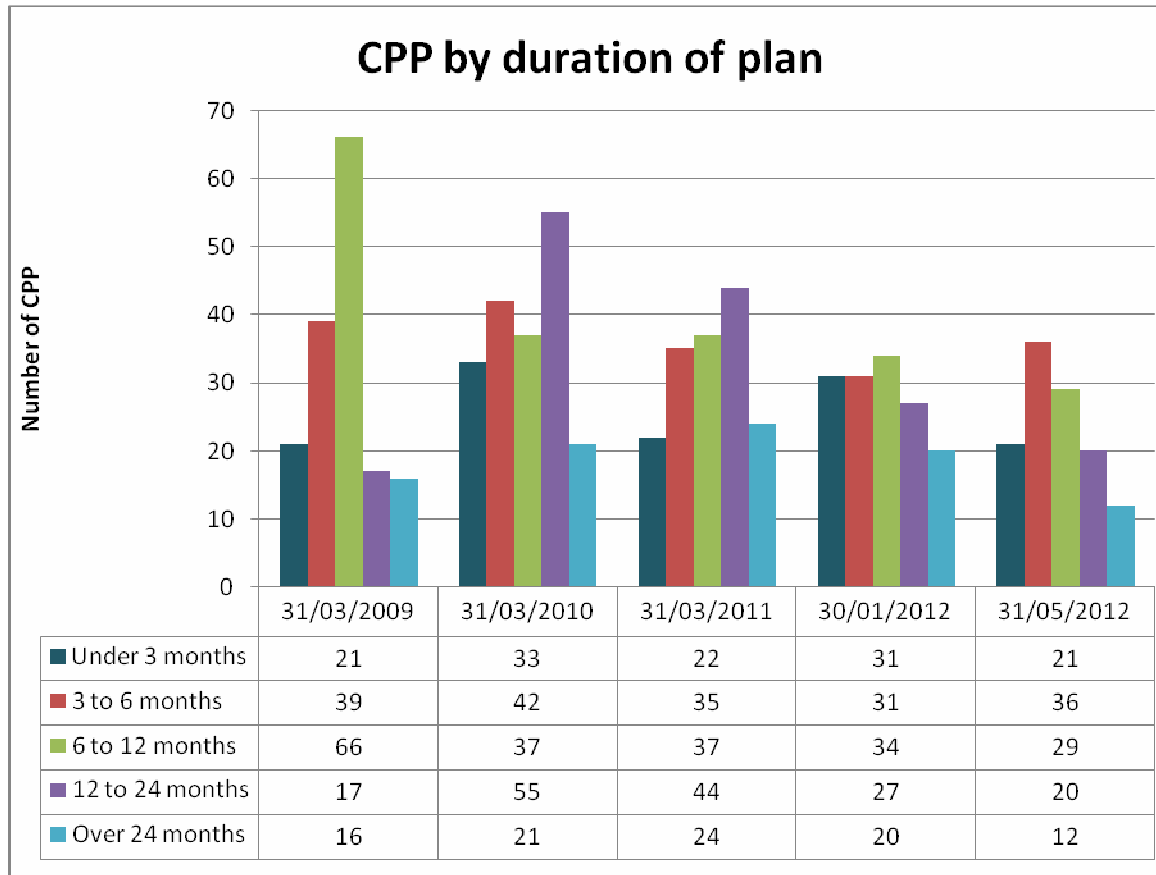
Looking at comparator information, Harrow tends to record more cases of neglect and does not record any cases as having multiple categories. This suggests that local recording should be reviewed to ensure that different types of abuse and multiple abuse are being reflected on case files.

Comparator Info - Category of CPP at 31st March 2011 (%)

	Neglect	Physical Abuse	Sexual Abuse	Emotional Abuse	Multiple
England	43.9	10.6	5.4	28.2	11.8
London	46	9	3	34	9
Harrow	60	6	6	29	0

Source: Cin Census²²

B5 - CPP by duration of plan

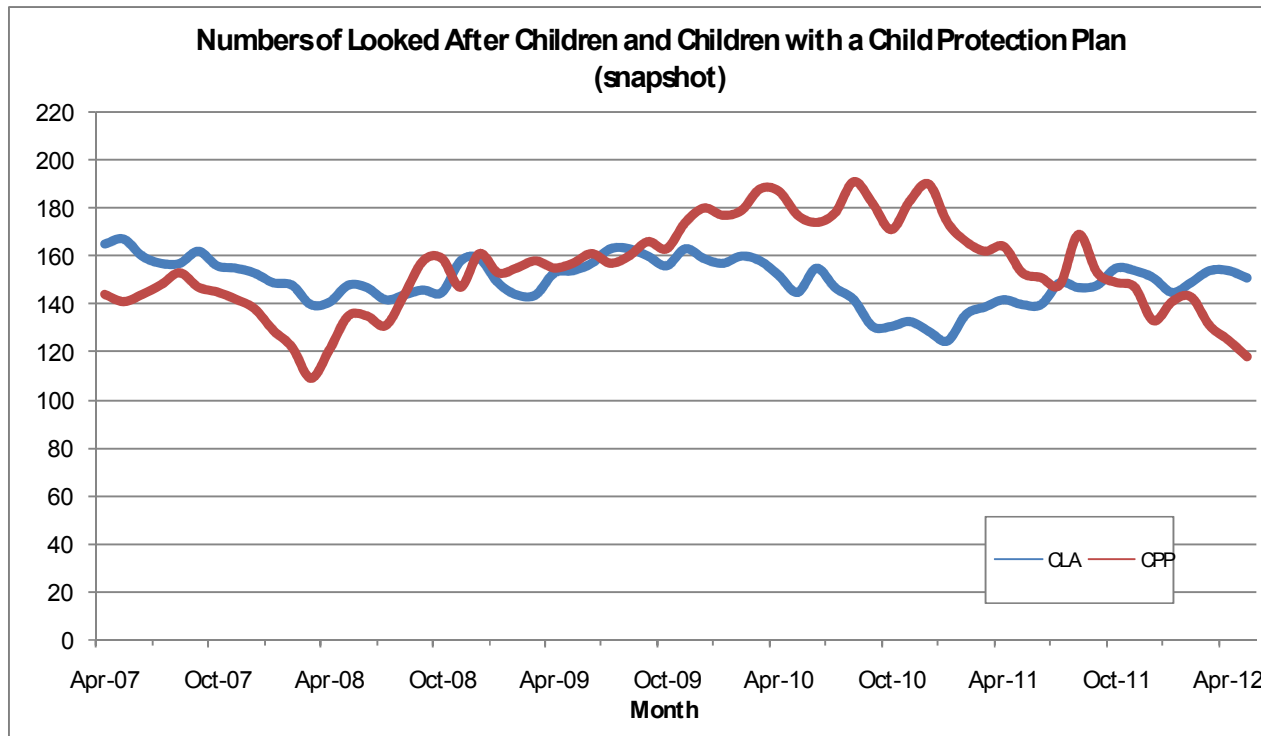


This chart reflects the increase in longer term CPP from 2009 to the peak at May 2011 when 30 CPP had been in place for more than 2 years. Since then, co-ordinated work has taken place to progress and end plans, meaning that the number over 2 year has reduced to 12. Work continues to reduce this further and to bring Harrow into line with comparator levels.

The numbers of short term CPP show some fluctuations but the main changes are in the reductions of long term plans.

Part C – Additional Information

C1 – Numbers of CLA and CPP over time



Comparator Info: Rates per 10,000 population at 31.03.2011

	CPP	CLA
Harrow	32	28
Stat Neighbour Average	34	52
England	39	59

CPP numbers are at their lowest since April 2008 – this is partly due to ongoing work to reduce the numbers of longer term cases. Rates of CPP were already slightly below comparator averages at the end of 2010-11. The current rate would put Harrow in line with the lowest rate in the statistical neighbour group.

Children looked after numbers have risen since 2011 – this could be an early indication of a shift towards more CLA as Harrow moves to accommodate children rather than allow CPP to continue for a long time or without progress.

Harrow continues to have a significantly lower rate of CLA than the statistical neighbour average. Harrow's rate per population is just over half the statistical neighbour average. Further analysis of the group shows that although Harrow is the lowest, Merton, Kingston and Redbridge have similar rates. The average is also pulled up by Croydon which has a very high rate of asylum seeking CLA due to the location of the UK Border Agency facility, plus Hillingdon and Hounslow which are similarly affected by Heathrow.

C2 – Key Performance Indicators

PI Ref	PI Description	England average 10/11	Best National 10/11	Best London 10/11	Harrow 10/11	Harrow 11/12	Provisional Target 12/13	Commentary / Actions
NI 59	Timeliness of Initial Assessments (% complete in 10 working days)	75.5	Oldham (98.3) N Lincolnshire (98.2) C Bedfordshire (98.1)	K&C (97.3) Islington (95.0) Camden (94.3)	85.5	71.4	85.0	The dip in performance has continued into 2012-13. An action plan is in place led by the Access Team Service Manager. There has been a major reduction in late assessment during June and this will continue to be closely monitored.
NI 60	Timeliness of Core Assessments (% complete in 35 working days)	78.1	NE Lincolnshire (98.8) Oldham (97.2) Lambeth (95.4)	Lambeth (95.4) Richmond (90.8) Enfield (89.6)	80.5	83.6	83.0	
NI 61	Timeliness of CLA adoptions following agency decision (%)	74.0	Ealing (100) Herefordshire (100) Reading (100)	Ealing (100) Lewisham (84.6) Southwark (82.4)	83.3	100.0	80.0	
NI 62	CLA placement stability: number of moves (% with 2+ moves)	10.7	Cambridgeshire (1.3) NE Lincolnshire (3.4) Northumberland (4.5)	Barnet (6.3) H&F (6.4) Islington (7.5)	15.0	16.2	11.0	This indicator is impacted by our older CLA cohort and CLA who go missing for more than 24 hours. An action plan is in place to provide support and improve placement options further.
NI 63	CLA placement stability: length of placement (%)	68.6	Halton (87.0) Bournemouth (86.0) Kingston (84.6)	Kingston (84.6) Westminster (81.1) Wandsworth (77.3)	66.7	71.4	68.0	
NI 64	Ceased CPP that lasted 2 or more years as a % of CPPs that are ended.	6.0	Rutland (0.0) Stoke-on-Trent (0.0) Wiltshire (0.0)	K&C (2.1) Lambeth (2.9) Islington (3.0)	17.2	18.1	12.0	This indicator rises as a result of necessary work to end long term CPPs. Associated with this, a major reduction in total number of CPP over 2 year has been achieved (currently 12 compared with a peak of 30 at May 2011)

NI 65	CPP for 2nd or subsequent time (%)	13.3	Liverpool (2.1) Bexley (2.1) Milton Keynes (2.4)	Bexley (2.1) Richmond (3.9) Waltham Forest (4.3)	8.8	14.2	10.0	
NI 66	Timeliness of CLA reviews (%)	tbc	tbc	tbc	96.8	98.6	100.0	
NI 67	Timeliness of CPP reviews (%)	97.1	68 LAs with 100%	16 London LAs with 100%	100.0	100.0	100.0	
NI 147	% of Care Leavers in suitable accommodation	89.8	Ealing (100) Wandsworth (100) Havering (100)	Ealing (100) Wandsworth (100) Havering (100)	91.7	72.7	88.0	16 out of 22 former care leavers were in suitable accommodation. For the other 6 we have no information because we are no longer in contact with the young person. This includes a number of young people who have been deported.
NI 148	% of Care Leavers in education, employment or training	61.2	North Tyneside (88) Tower Hamlets (87) Knowsley (84)	Bexley (80) Richmond (80) Lambeth (79)	66.7	31.8	75.0	7 out of 22 former care leavers are in EET. 6 were not in contact (as above) and 9 young people were known not to be in EET. A new personal adviser has been appointed to the care leaving team to strengthen transition into work or training.